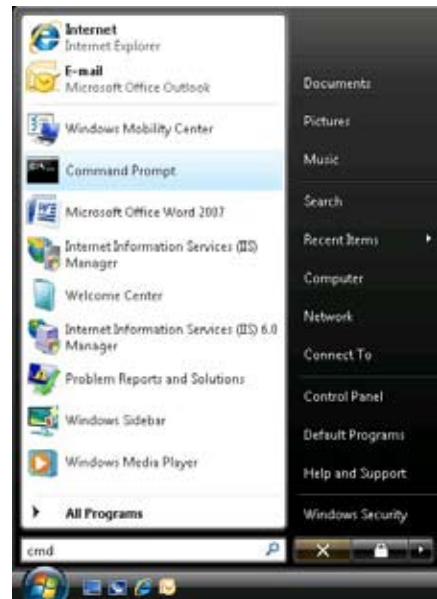


To perform a trace route on a Windows computer, please follow these steps:

**Step 1** Open a command prompt.

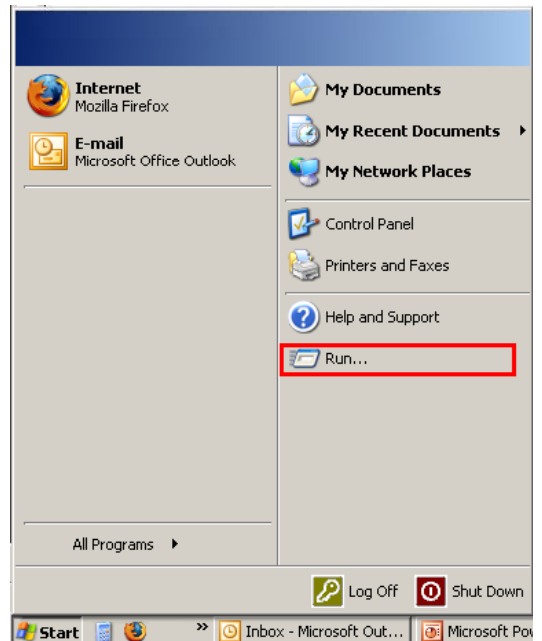
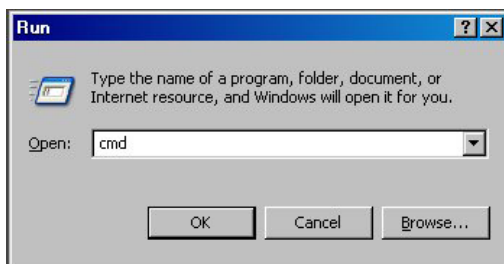
**To do this in Windows Vista**

- 1a Click the **Vista icon** to display the Start menu.
- 1b Click the **Command Prompt** option.
- 1c If that option is not in the menu, enter “cmd” in the search box at the bottom and press **Enter**.



**To do this in Windows XP, Windows 2000 or Windows 98/95**

- 1a Click **Start** and select **Run**.
- 1b Type “cmd” in the space provided and click **OK**.



**Step 2** Within command prompt, type **tracert** and the domain you wish to trace “**exampledomain.com.au**”.



**Step 3** Command prompt will then show the results of your trace route to the destination – **exampledomain.com.au**.

Now to determine whether the domain goes the peering network you will need to look for a mention of it. For example the WAIX network, look for anything mentioning waix..

There you go! Using this handy tool you can now determine whether a website goes through a peering network and start making better use of your Peering allowance.