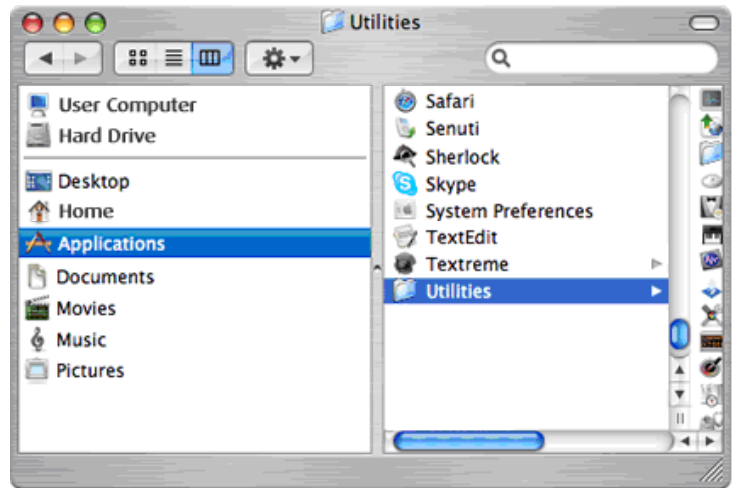


To perform a trace route on a Mac, please follow these steps:

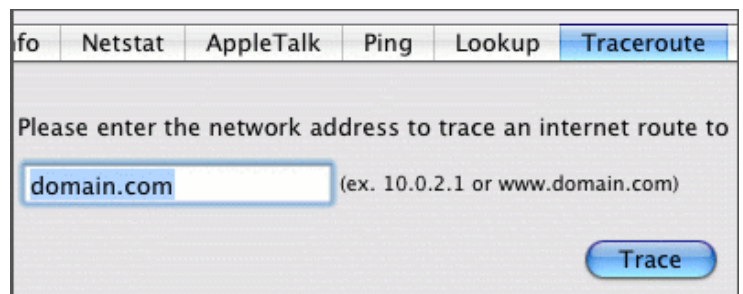
Step 1 Open up a finder window, select the **Applications** Folder, then the **Utilities** folder.



Step 2 Open the **Network Utility** program.



Step 3 Select the **Traceroute** tab.



Step 4 Enter the domain name or IP address of your website and click **Trace**.

Step 5 From the results you can determine whether the domain goes through a peering network. For example the WAIX network, look for anything mentioning waix.

There you go! Using this handy tool you can now determine whether a website goes through a peering network and start making better use of your Peering allowance.